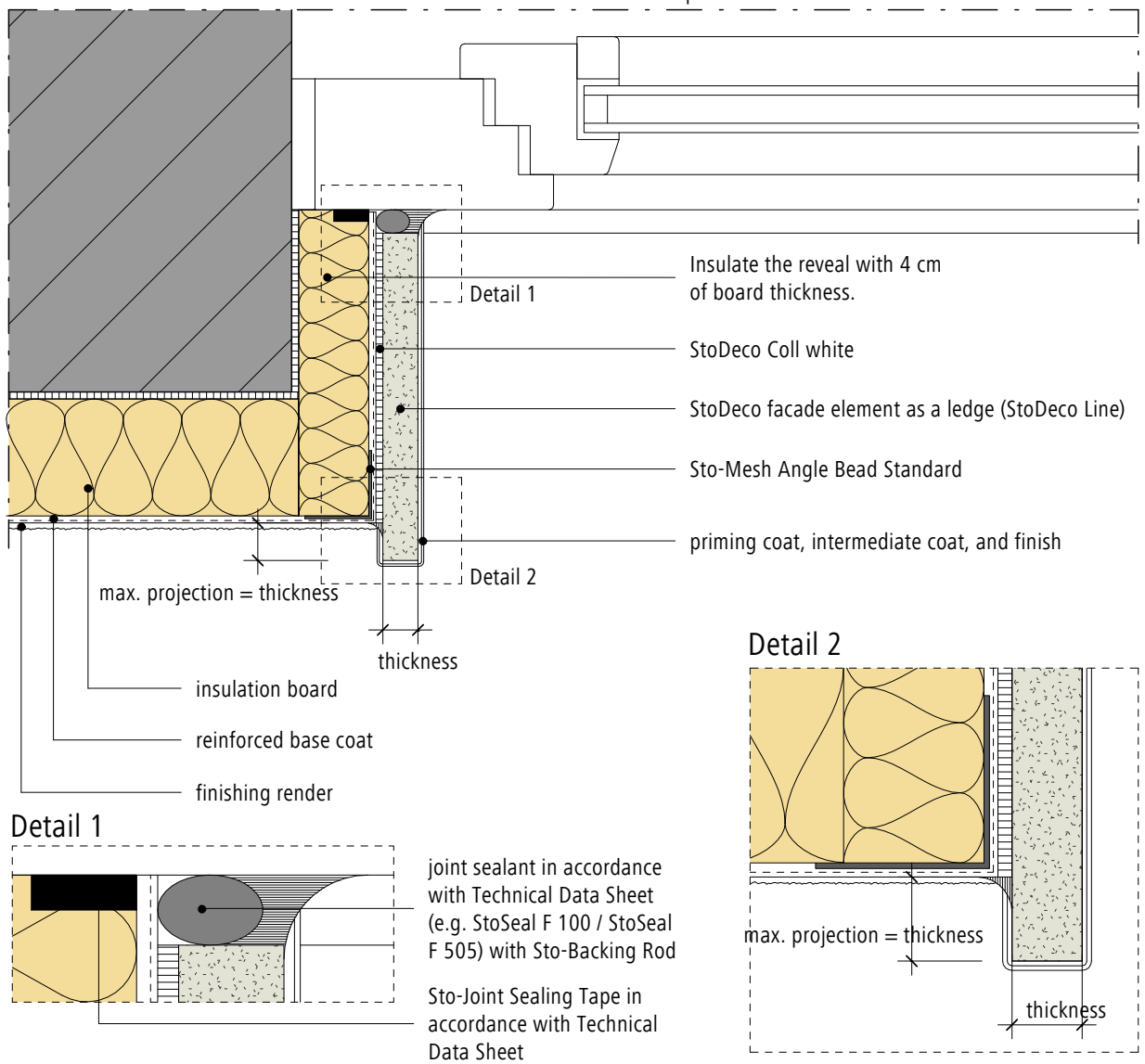


External wall insulation system Reveal/lintel (horizontal section): Connection of a StoDeco facade element (StoDeco Line) to a window frame in a reveal	StoDeco facade elements	Rev. no. 2017-01-01 Sto-HQ-EN
		GEN-DP-0401

Note:
 Install a sheet metal cover on-site when window sill projects ≥ 300 mm and cornices ≥ 150 mm.
 Movement joints for panels (StoDeco Panel) after 6 x 6 m. Movement joints for ledges (StoDeco Line) after 10 m.

Note: Airtightness and fixing of the windows in accordance with the window manufacturer's specifications.



Note:
 Fill joints to adjacent building elements and notches for window sills with Sto-Backing Rod and StoSeal F 100 / StoSeal F 505 in accordance with IVD Data Sheet no. 9 or with Sto-Joint Sealing Tape in accordance with the Technical Data Sheet.
 Form connection joints as fillet.
 Ensure that the spacing between the drip edge and the wall is big enough.

Note: This drawing is a general, non-binding planning suggestion which depicts the execution only schematically, but is no substitute for the required working and detail drawing as well as the installation plans. The applicator/planner/customer is independently responsible for determining the suitability, completeness and dimensions of the product for the particular construction project. Neighbouring works are described only schematically. All specifications and assumptions must be adjusted or agreed in the light of local conditions. Compliance with the technical specifications contained in the Technical Data Sheets, application guidelines, and system approvals is mandatory.